

Catch the Giving Spirit!

2017 Employee
Caring Campaign

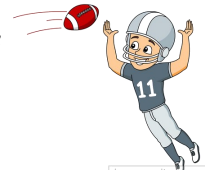
515 Pledges = Over 62.99%

Over halfway mark & still climbing!

Final Department Percentages

Final!!

*Congratulations and THANK YOU to all the employees
for the magnificent support given to the
Employee 2017 Caring Campaign!*



515 Pledges = 62.99%

Department Percentages of



Administration, Breast Health Center, Business Office, Cabinet, Care Management, Central Supply, Emergency Department, Family Resource Center, Human Resources/Employee Health, Management Team, Patient Scheduling, Performance Improvement, Pharmacy, Pre Admission Testing, Radiology (Mammography), Safety/Security/BioMed, Volunteers/Foundation



Admitting/Registration, Advanced Wound Center, Birthing Center, Cardiopulmonary Rehab, Environmental Services, Health Improvement Management (HIM), Maintenance, Out Patient Surgery, PACU, Radiation Oncology,



Colorectal Surgery, CT Glenwood & CT Scan, Endoscopy, Medi Bus, PathLab, Patient Care Administration, Physical Therapy (Out Patient, PT East, Glenwood, HCW), Radiology (Support, Surgery, CathLab), Sterile Processing, Surgery



2B (General Med/Surg), 3AB (Telemetry), 4H (Ortho Neuro), Behavioral Health Psych, Food & Nutrition Services, ICU (Critical Care), Personnel Pool, Physical Therapy In-Patient, Radiology (Neuro-diagnostic/Nuclear Med), Respiratory Therapy, Sleep Lab, Sports Medicine,



Clinical Coding/Coders, Medical Transcription, Radiology (Diagnostic/Ultrasound/MRI)

Your gift makes a difference
in so many ways!

Catch the Giving Spirit!

THANK YOU FOR YOUR SUPPORT!



**JENNIE EDMUNDSON
FOUNDATION**